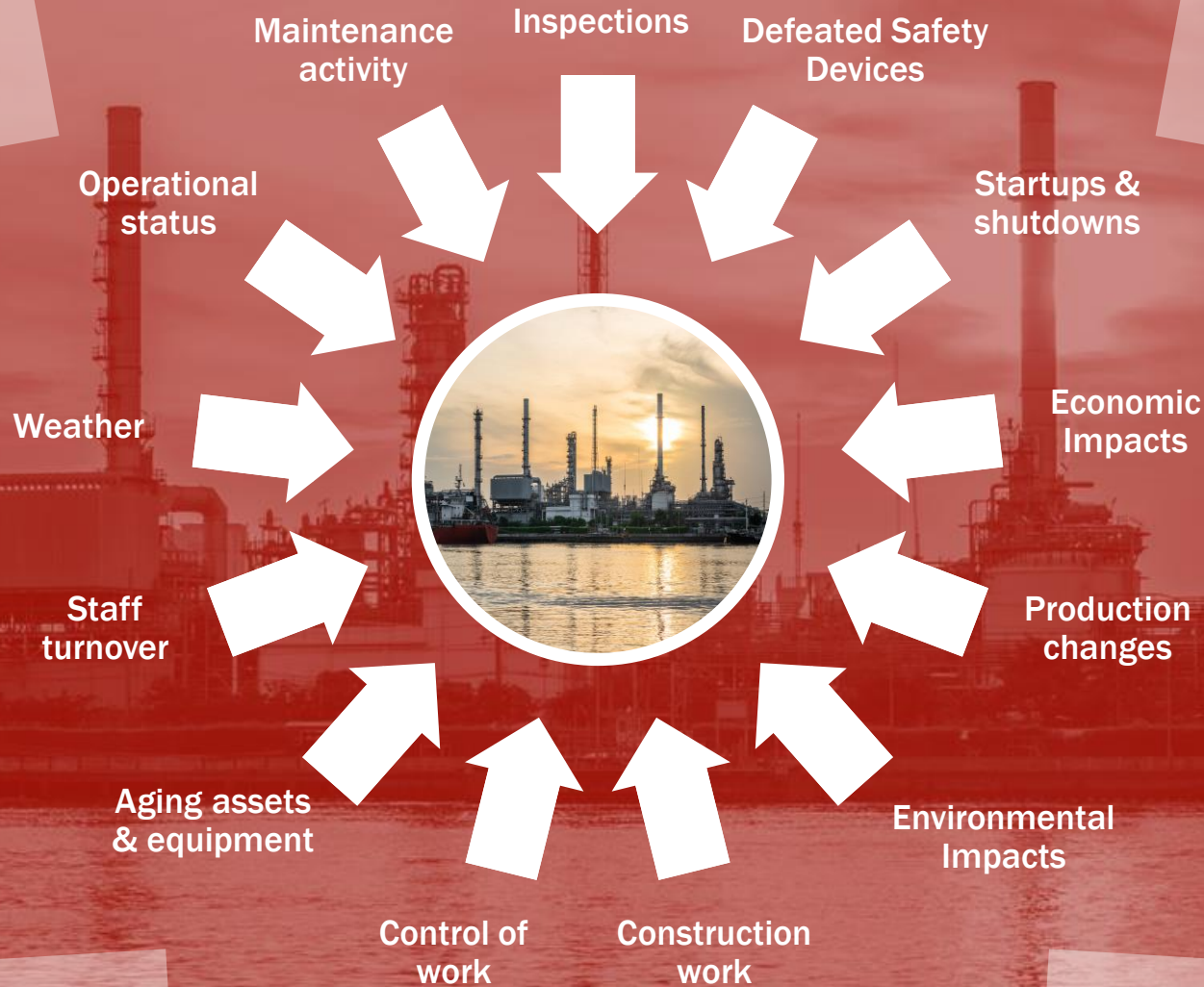




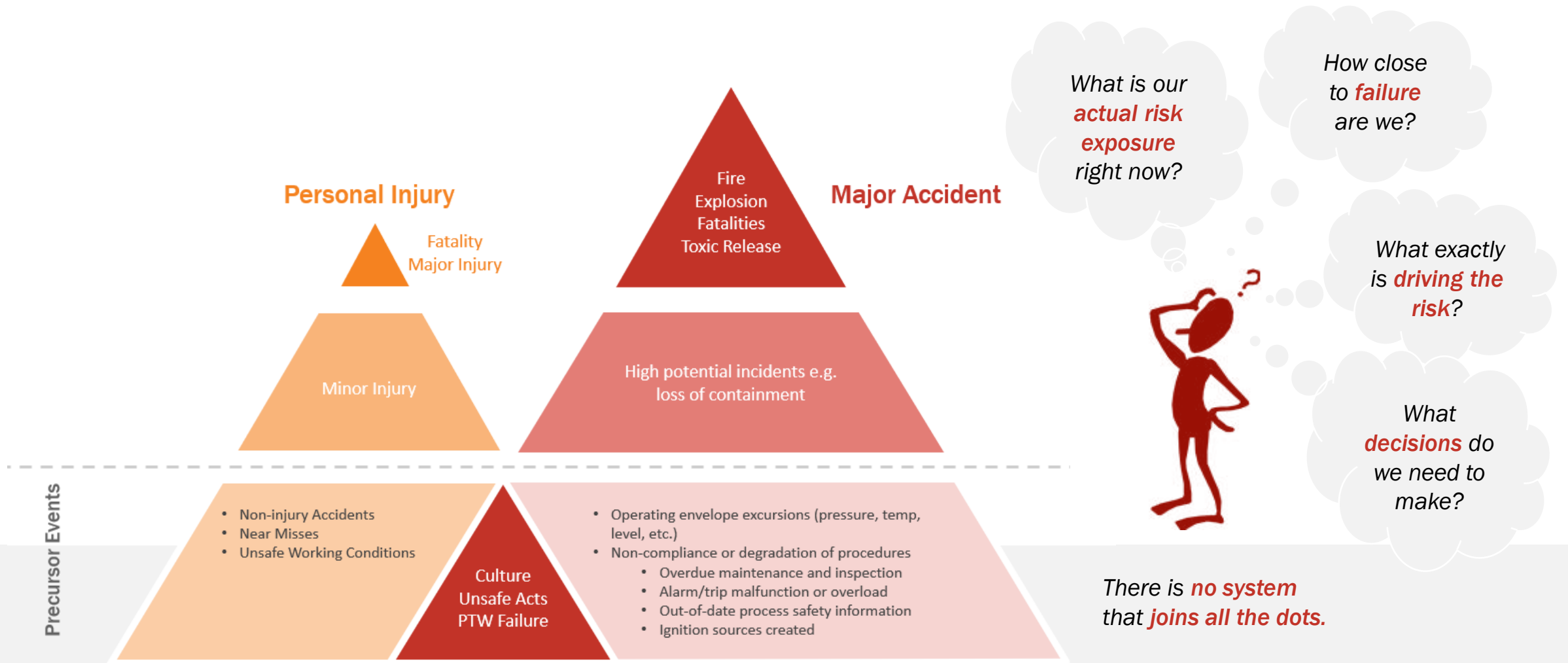
**Don't Waste That Data: Practical Ways to Model Risk
and Improve Frontline Decision-Making**



Your Assets Are Constantly Evolving and Under Stress



Can PSM Managers Be Confident That Their Assets Are Safe?





Case Study 1: Would Better Visibility of Hazards Helped Avoid a BLEVE

Safety interlocks were in Bypass Mode

SCE not monitored over an extended period

No clear oversight of PRV status

29 people heavily injured

Heavy financial and reputational loss





Case Study 2: Would a Better System Have Alerted the Failure of Sensors

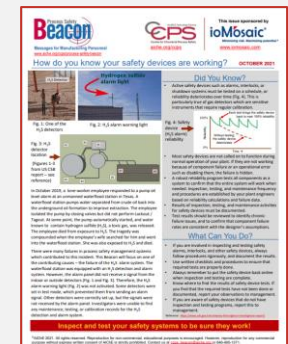
Failure of H₂S detection and alarm system

Improper process for LOTO

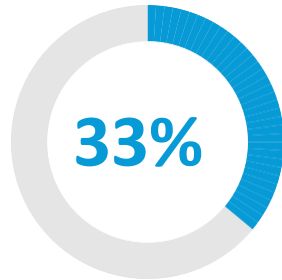
Multiple failures in PSM systems

2 fatalities

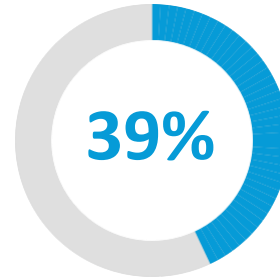
Reputational damage for company



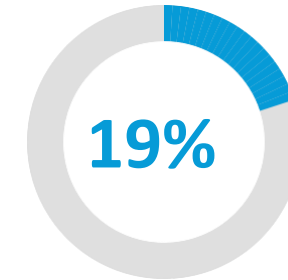
PSM Managers face a constant operations vs data challenge



33% of respondents said that they have base asset data in place but no systems to support them. Therefore, data utilization is ineffective.



39% of respondents indicated they have some integrated systems providing some insights; however, much of the data live in silos.



19% of respondents said that the critical safeguards are monitored in real time.



32% of respondents have an integrated digital solution to collect, manage and report data.



A staggering **84%** not of respondents do not use integrated solutions and predictive algorithms to manage real-time risk identification and management, this demonstrates why organizations are lagging in their safety performance.

The Solution

A solution that delivers a view of the operational reality by extracting, translating and aggregating the data from sensors, systems and human activity



Common currency
for disparate data



Unlocks meaningful
relationships,
previously unseen



Provides a realistic
view of the
operational reality



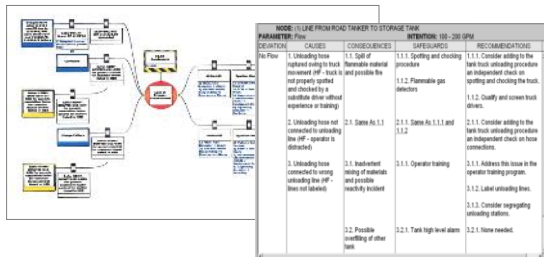
SHOWS IN REAL-TIME
What's happening
When it's happening
Where it's happening
What's driving the risk



Integrated workflows to
ensure safe & efficient
execution

Dynamic Risk Pathways helping Frontline decision making

Policies and procedures



Bowtie Diagrams

HAZOP's

PHAs

Safety Cases

Complex operating environment



Operators trying to connect the dots

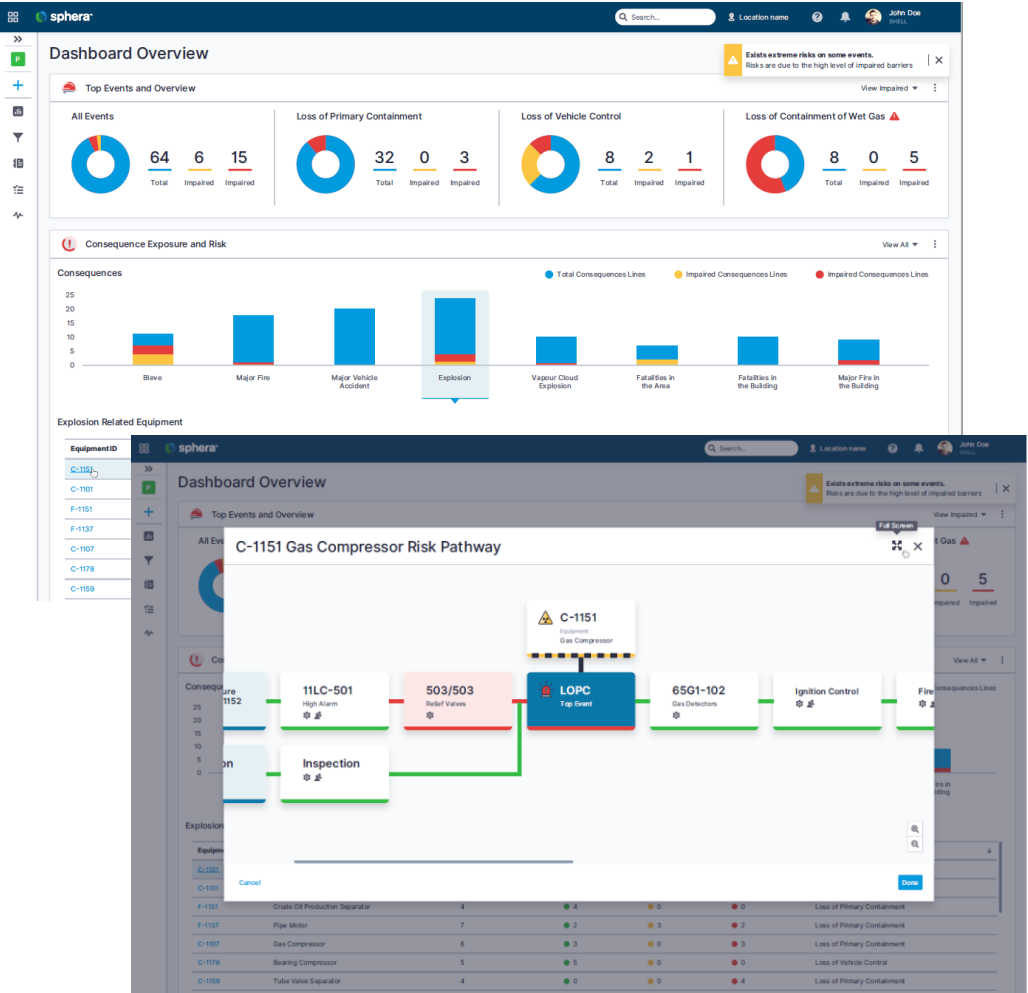


Real-time capture of risk related data



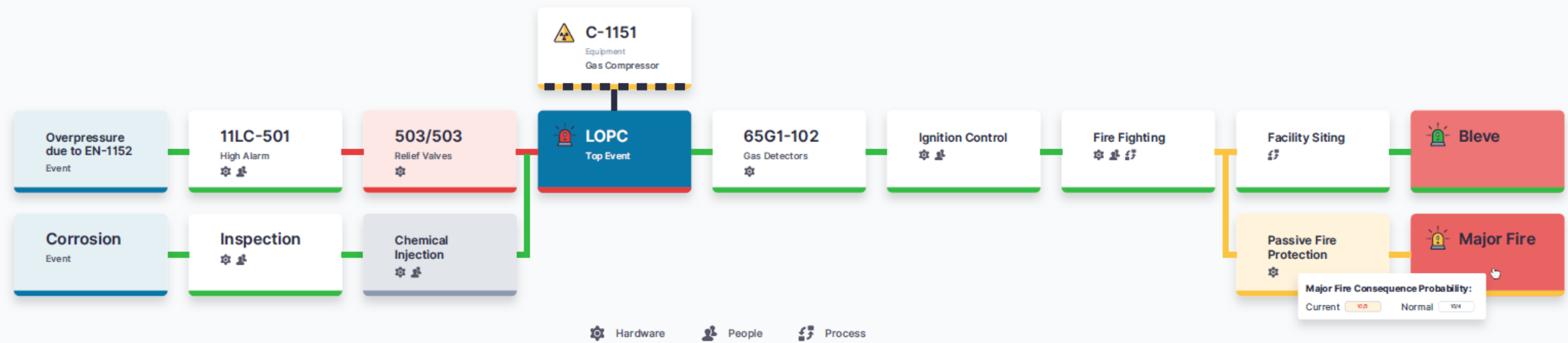
Intelligent translation & mapping

Real Time View of Safeguarding Barrier Status



Emerging Risk Pathways allow for early intervention

A Real Time View of Your PSM Factors



Systems approach



Connected enterprise



Early Warnings

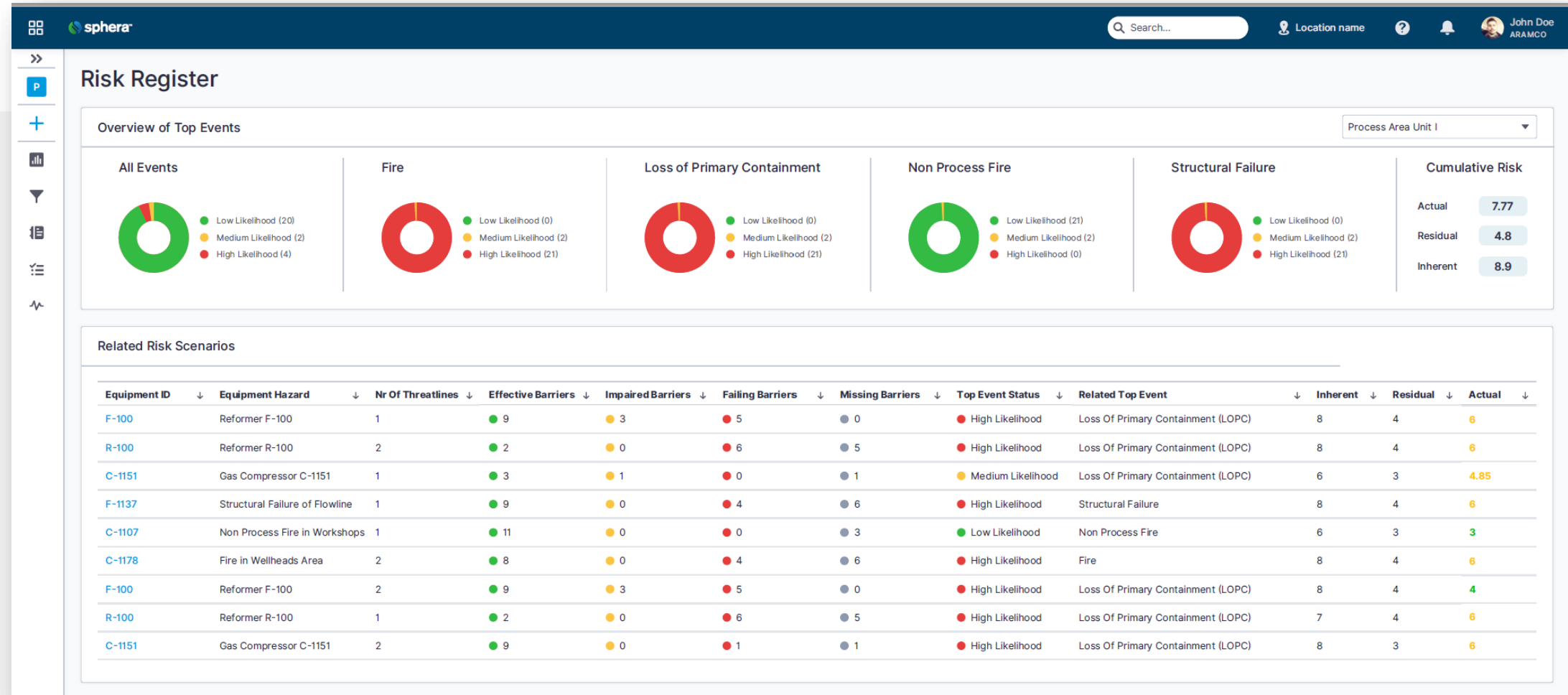


Maintenance
Prioritisation

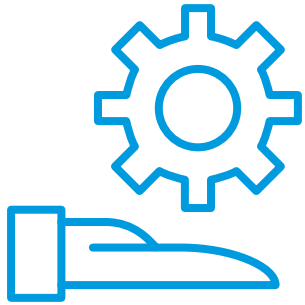


Operations Visibility

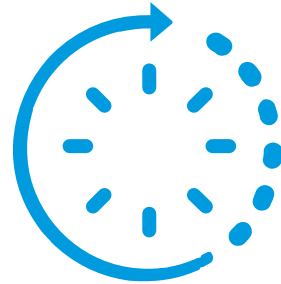
Know Which Events Your Assets Are Exposed To



Use your data to enable Dynamic Risk Pathways



Improve operational decision making with early intervention based on Risk



Better compliance to regulators and other stakeholders



Better visibility of operational risk across organization improving technical and personal safety



Optimized allocation of funds for prioritized maintenance and assurance

Questions? Let's Stay Connected!



ABHILASH MENON

amenon@sphera.com